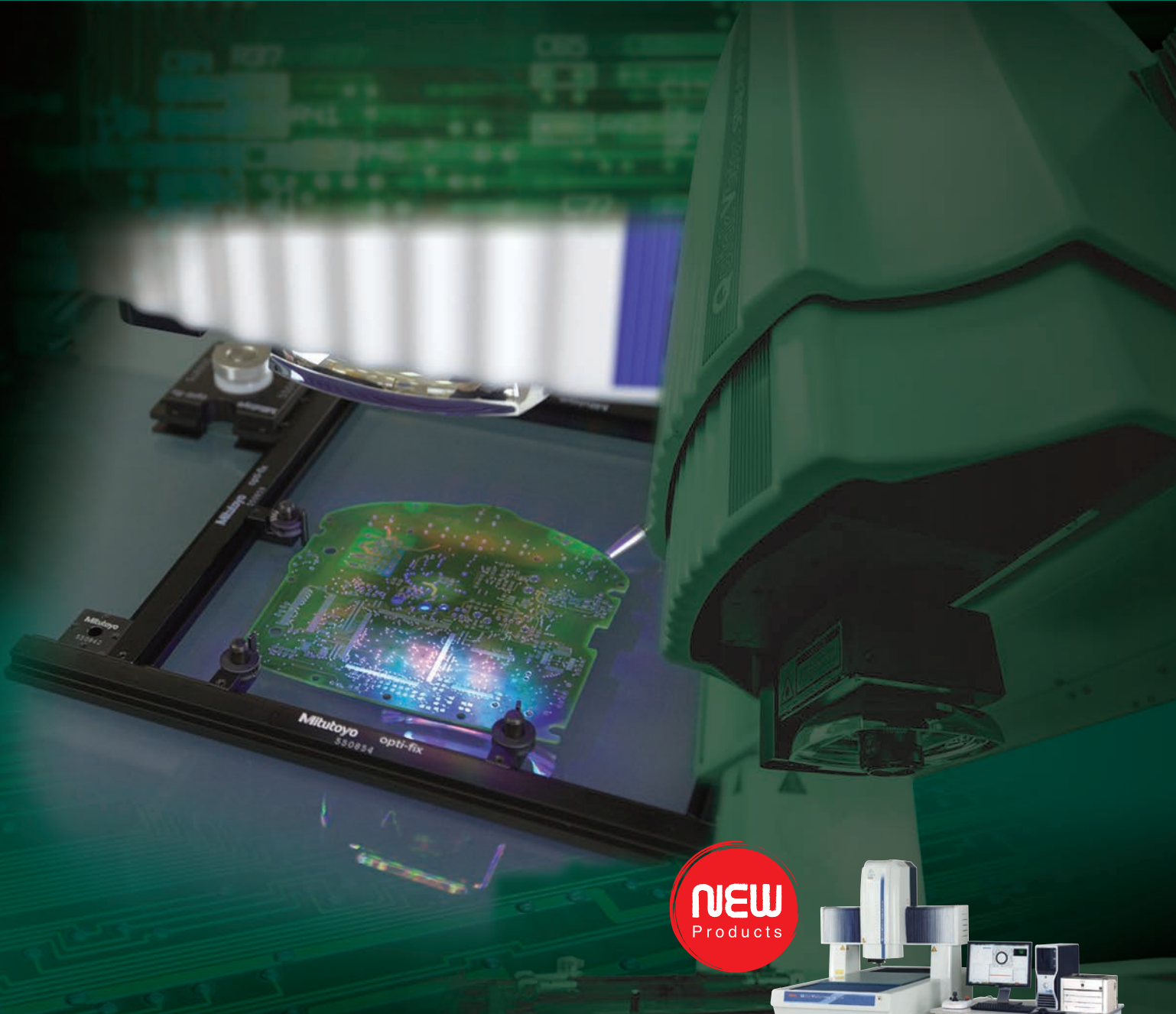


Non-stop CNC Vision Measuring System with Tracking Auto Focus (TAF) Quick Vision QV STREAM PLUS

*Captures images and tracks surfaces while in motion
providing unsurpassed throughput*



Vision Measuring Systems



Bulletin No. 2153

Mitutoyo

Non-stop CNC Vision Measuring System with Tracking Auto Focus (TAF) Quick Vision QV STREAM PLUS



FEATURES

- Enables high-throughput measurement—more than five times higher than earlier models. *Using Mitutoyo sample workpieces
- New method captures the image continuously without stopping the stage.
- Includes a tracking auto focus (TAF) feature that tracks the contours of waves and warpage on the surface of the workpiece and maintains focus. This eliminates time spent for autofocusing.

SPECIFICATIONS

Specifications for QV STREAM PLUS Series systems with TAF

Order No.	363-176	363-186	363-196
Model	QV-X302T1S-D	QV-X404T1S-D	QV-X606T1S-D
Main unit			
Measuring range (XxYxZ)	11.81"x7.87"x7.87" (300x200x200mm)	15.57"x15.57"x9.84"(400x400x250mm)	23.62"x25.59"x9.84"(600x650x250mm)
Performance			
Accuracy E1	X, Y axes (image)	(1.5+3L/1000) μm *1	
	Z axis (image)	(1.5+4L/1000) μm *1	
Accuracy E2	XY plane (image)	(2+4L/1000) μm *1	
Resolution	0.1μm		
TAF Z-axis resolution	0.3μm		
Operating temperature range	20±1°C		
Main equipment and features			
Imaging Device	B&W CCD		
Illumination Unit	Co-axial Light	Color LED	
	Transmitted Light	Blue LED	
	PRL	Color LED (quadrant)	
Observation unit	PPT 1X-2X-6X		

*1 Determined using Mitutoyo inspection methods. Optical magnification for which accuracy guaranteed: 2.5X objective (QV-HR2.5X or QV-SL2.5) + 2X tube lens

Tracking Auto Focus (TAF)

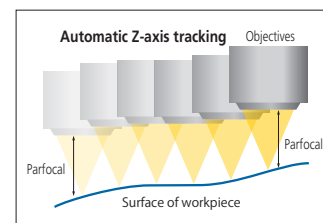
The TAF feature focuses continuously, adjusting to changes in the height of the object being measured. Automatic tracking of surface waves and warpage (in the Z axis height direction) improves measurement throughput. The feature also cuts out the hassle of focusing during manual measurement, reducing the work burden for measuring system operators.

Tracking Auto Focus (TAF)

AF principle	Objective coaxial autofocusing (knife edge method)				
Suitable objectives	QV-HR1x	QV-SL1x	QV-HR2.5x	QV-SL2.5x	QV-5x
Tracking range*2	6.3mm (±3.15mm)	6.3mm (±3.15mm)	1mm (±0.5 mm)	1mm (±0.5 mm)	0.25mm (±0.125mm)
Spot diameter*3	5.2μm	8.0μm	2.1μm	3.1μm	1.5μm
Laser source	Semiconductor laser (peak wavelength: 690nm)				
Laser power	0.9mW				
Laser safety	Class 2 (JIS C6802:2011, EN/IEC 60825-1:2007)				

*2 Varies according to workpiece surface texture and reflectance.

*3 These are design values.



Mitutoyo America Corporation
www.mitutoyo.com

One Number to Serve You Better
1-888-MITUTOYO (1-888-648-8869)

Mitutoyo

M³ Solution Centers

Aurora, Illinois
(Corporate Headquarters)
Westford, Massachusetts
Huntersville, North Carolina
Mason, Ohio

Plymouth, Michigan
City of Industry, California
Birmingham, Alabama
Renton, Washington
Houston, Texas

Coordinate Measuring Machines	=====
Vision Measuring Systems	=====
Form Measurement	=====
Optical Measuring	=====
Sensor Systems	=====
Testing Equipment and Seismometer	=====
Digital Scale and DRO Systems	=====
Small Tool Instruments and Data Management	=====

Note: All information regarding our products, and in particular the illustrations, drawings, dimensional and performance data contained in this printed matter as well as other technical data are to be regarded as approximate average values. We therefore reserve the right to make changes to the corresponding designs. The stated standards, similar technical regulations, descriptions and illustrations of the products were valid at the time of printing. In addition, the latest applicable version of our General Trading Conditions will apply. Only quotations submitted by ourselves may be regarded as definitive.

Mitutoyo products are subject to US Export Administration Regulations (EAR). Re-export or relocation of our products may require prior approval by an appropriate governing authority.

Trademarks and Registrations

Designations used by companies to distinguish their products are often claimed as trademarks. In all instances where Mitutoyo America Corporation is aware of a claim, the product names appear in initial capital or all capital letters. The appropriate companies should be contacted for more complete trademark and registration information.